

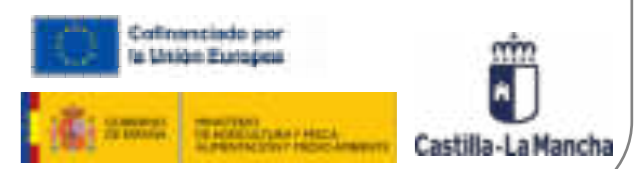
PLAN PROVINCIAL DE DEFENSA
CONTRA INCENDIOS FORESTALES

CUENCA

Peligro histórico

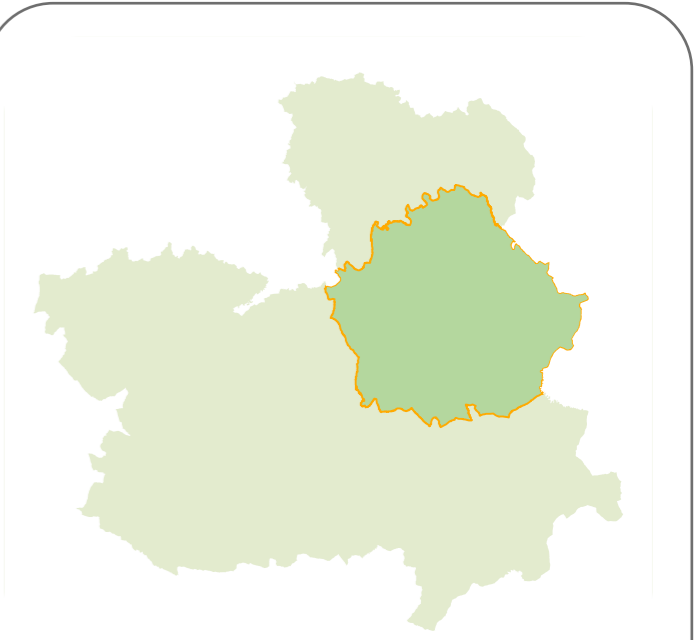
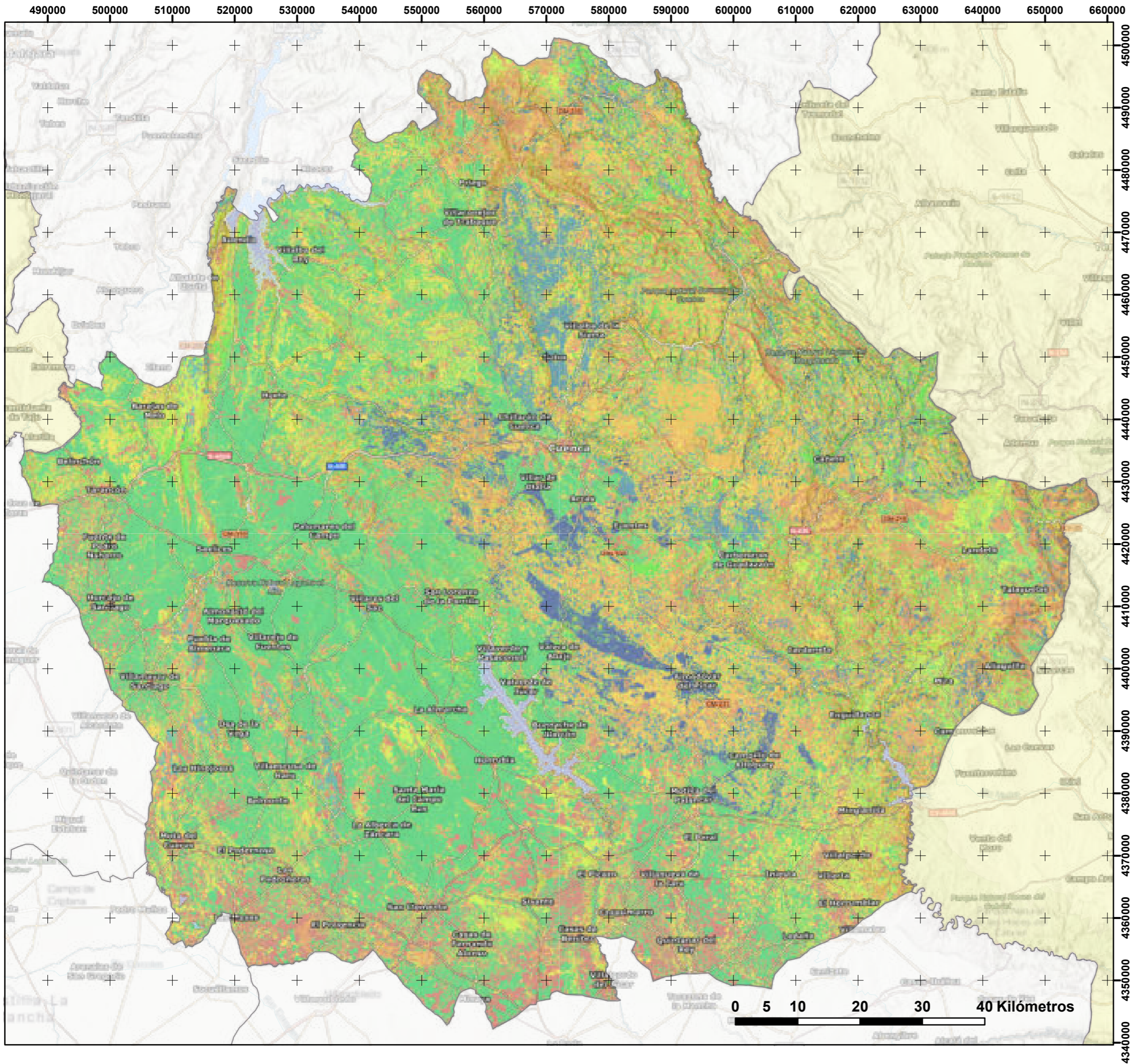
ETRS 1989 UTM ZONA 30N

Escala: 1:600.000



Peligro histórico

1	2	3	4	5	6	7	8	9
---	---	---	---	---	---	---	---	---



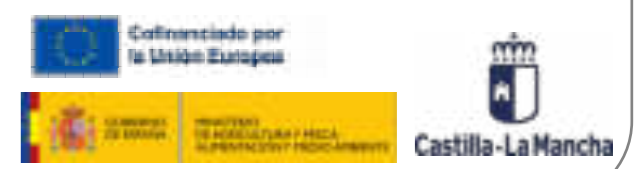
PLAN PROVINCIAL DE DEFENSA
CONTRA INCENDIOS FORESTALES

CUENCA

COMPORTAMIENTO POTENCIAL

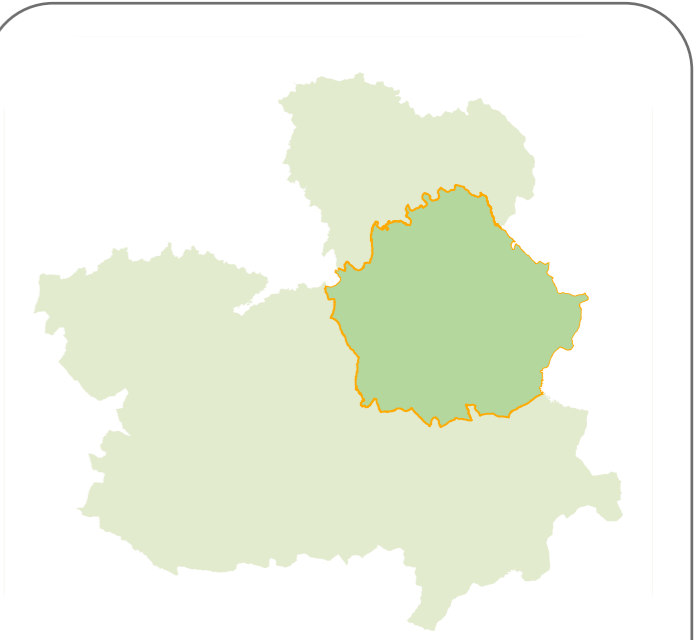
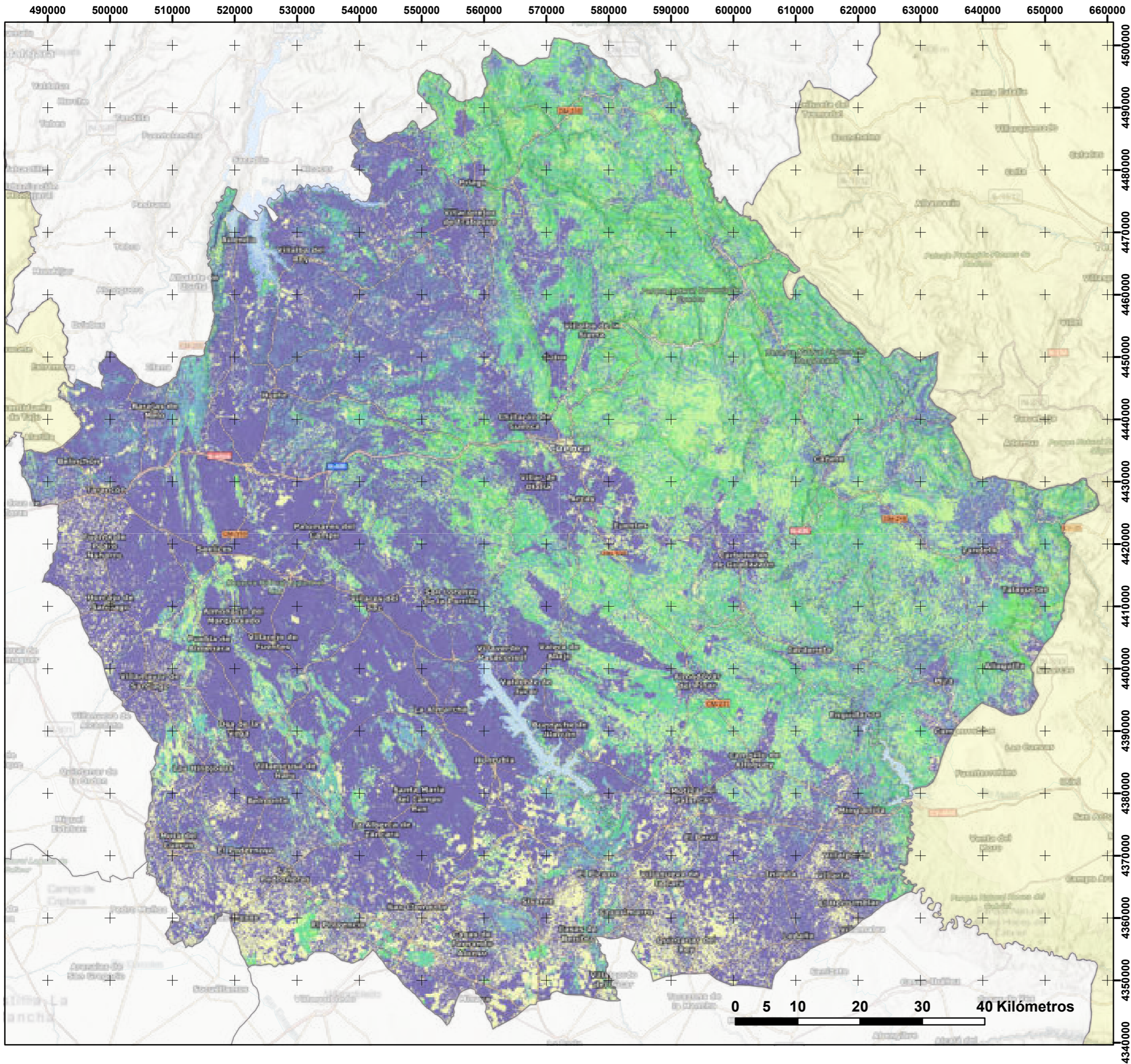
ETRS 1989 UTM ZONA 30N

Escala: 1:600.000



COMPORTAMIENTO POTENCIAL

1	2	3	4	5	6	7	8	9	10
---	---	---	---	---	---	---	---	---	----



PLAN PROVINCIAL DE DEFENSA
CONTRA INCENDIOS FORESTALES

CUENCA

Subíndice de ignición

ETRS 1989 UTM ZONA 30N

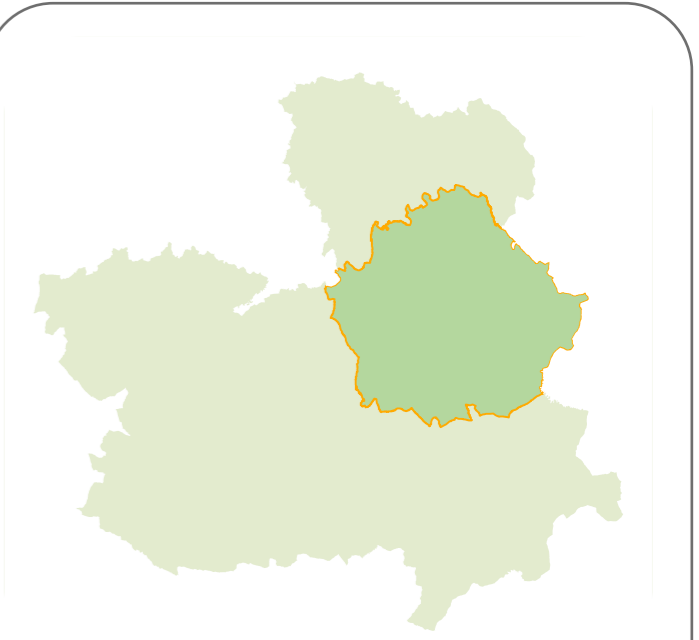
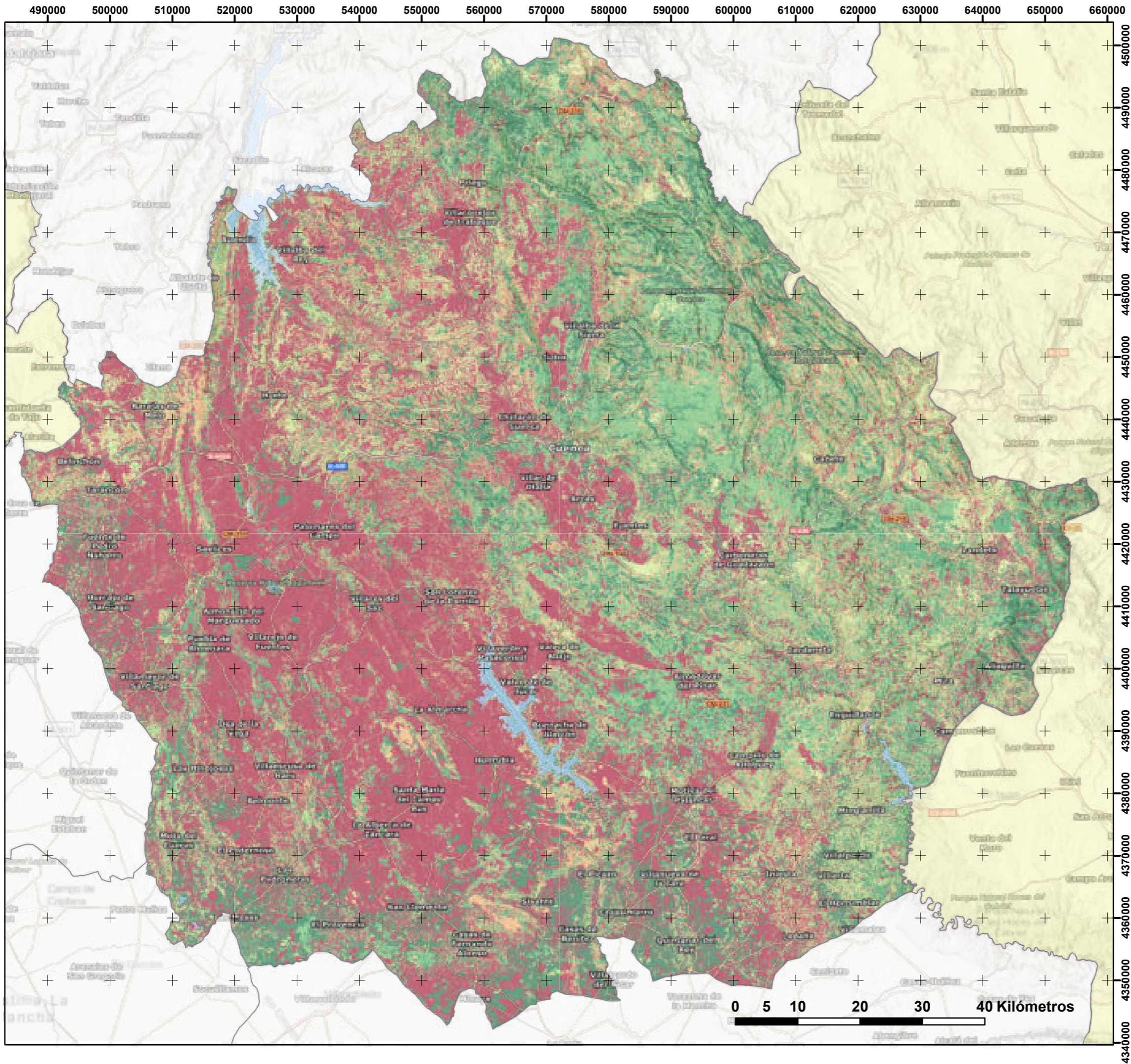
Escala: 1:600.000

Cofinanciado por la Unión Europea

Castilla-La Mancha

Subíndice de ignición

1	2	3	4	5	6	7	8	9
---	---	---	---	---	---	---	---	---



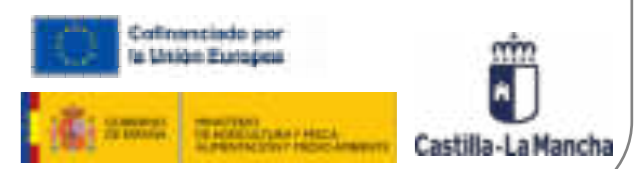
PLAN PROVINCIAL DE DEFENSA
CONTRA INCENDIOS FORESTALES

CUENCA

Comportamiento dinámico

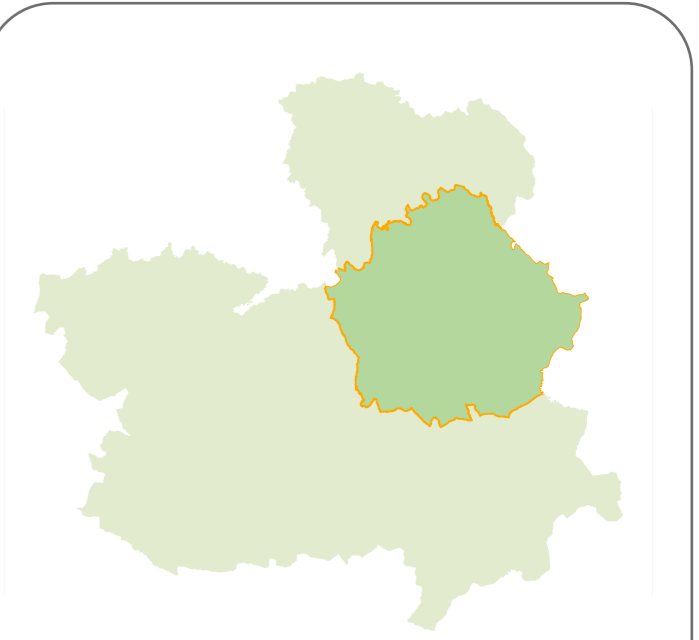
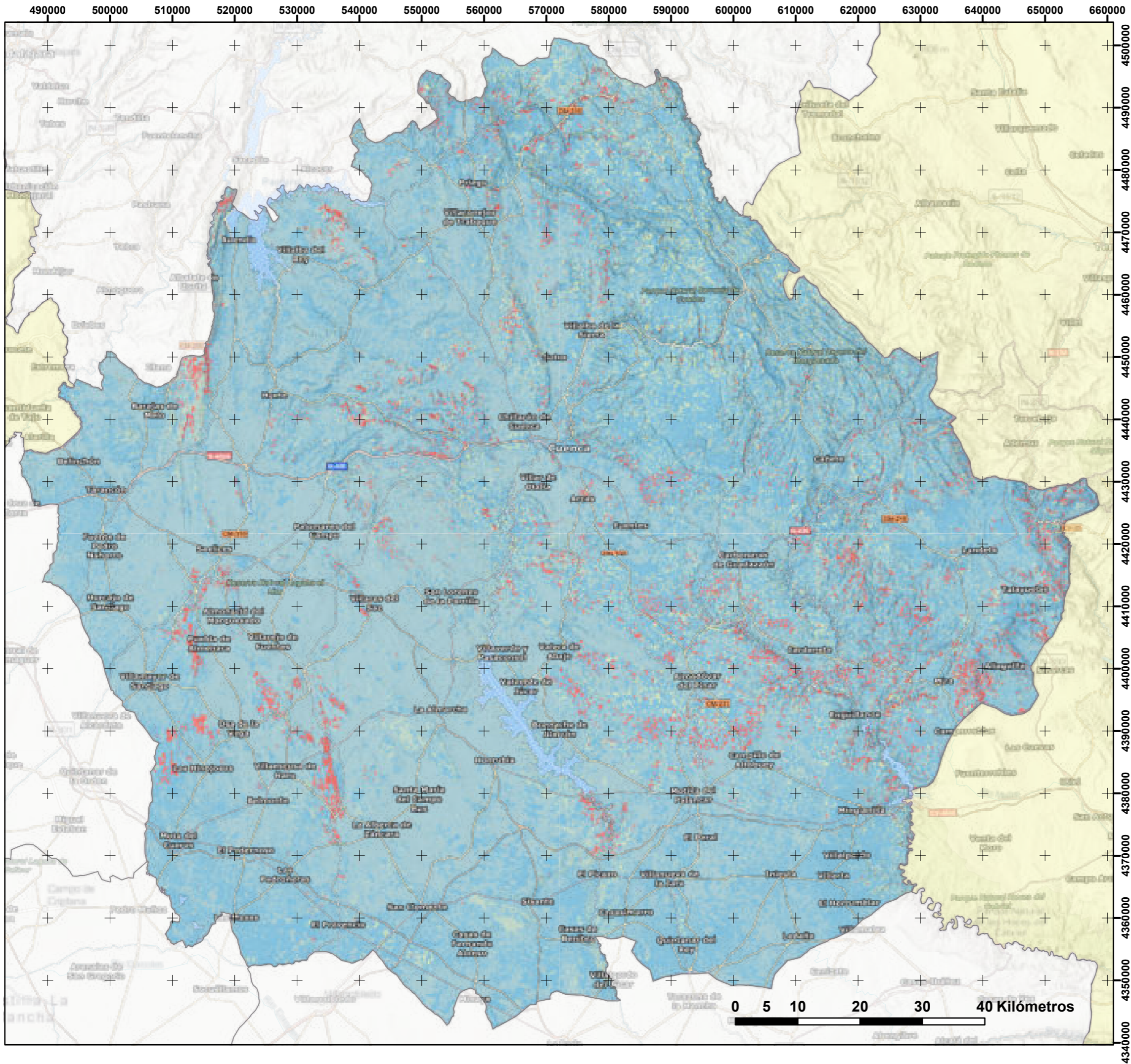
ETRS 1989 UTM ZONA 30N

Escala: 1:600.000



Comportamiento dinámico

1 2 3 4 5 6 7 8 9 10



PLAN PROVINCIAL DE DEFENSA
CONTRA INCENDIOS FORESTALES

CUENCA

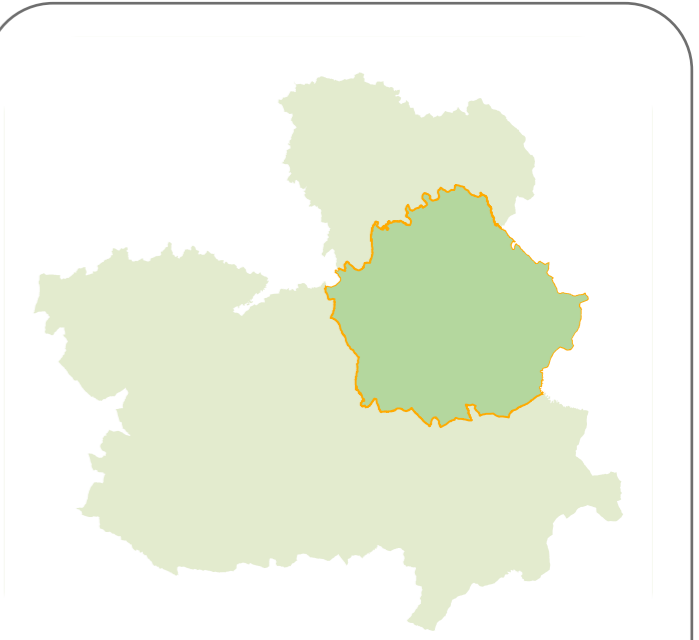
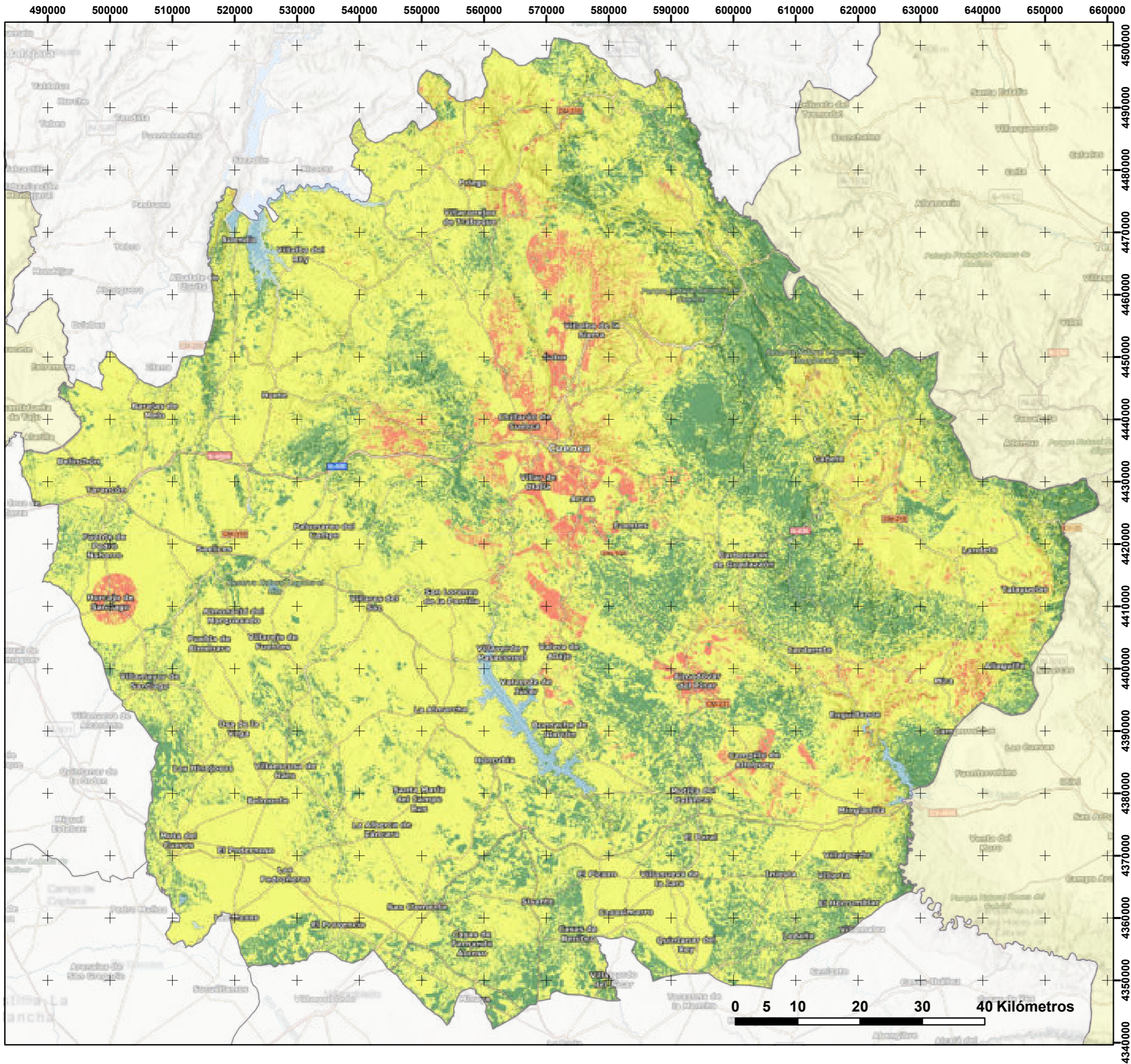
Comportamiento energético

ETRS 1989 UTM ZONA 30N

Escala: 1:600.000

Comportamiento energético

1 2 3 4 5 6 7 8 9 10



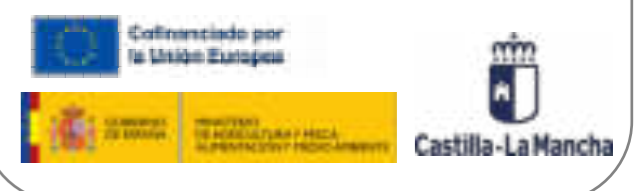
PLAN PROVINCIAL DE DEFENSA
CONTRA INCENDIOS FORESTALES

CUENCA

Peligro

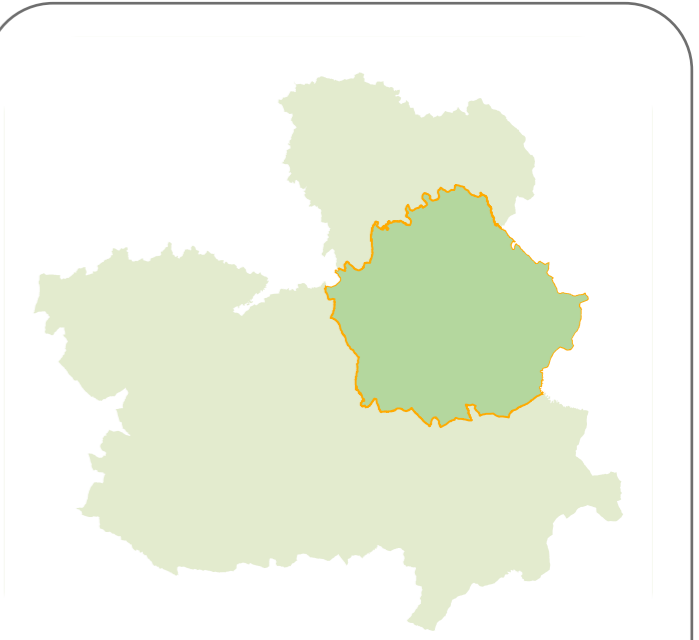
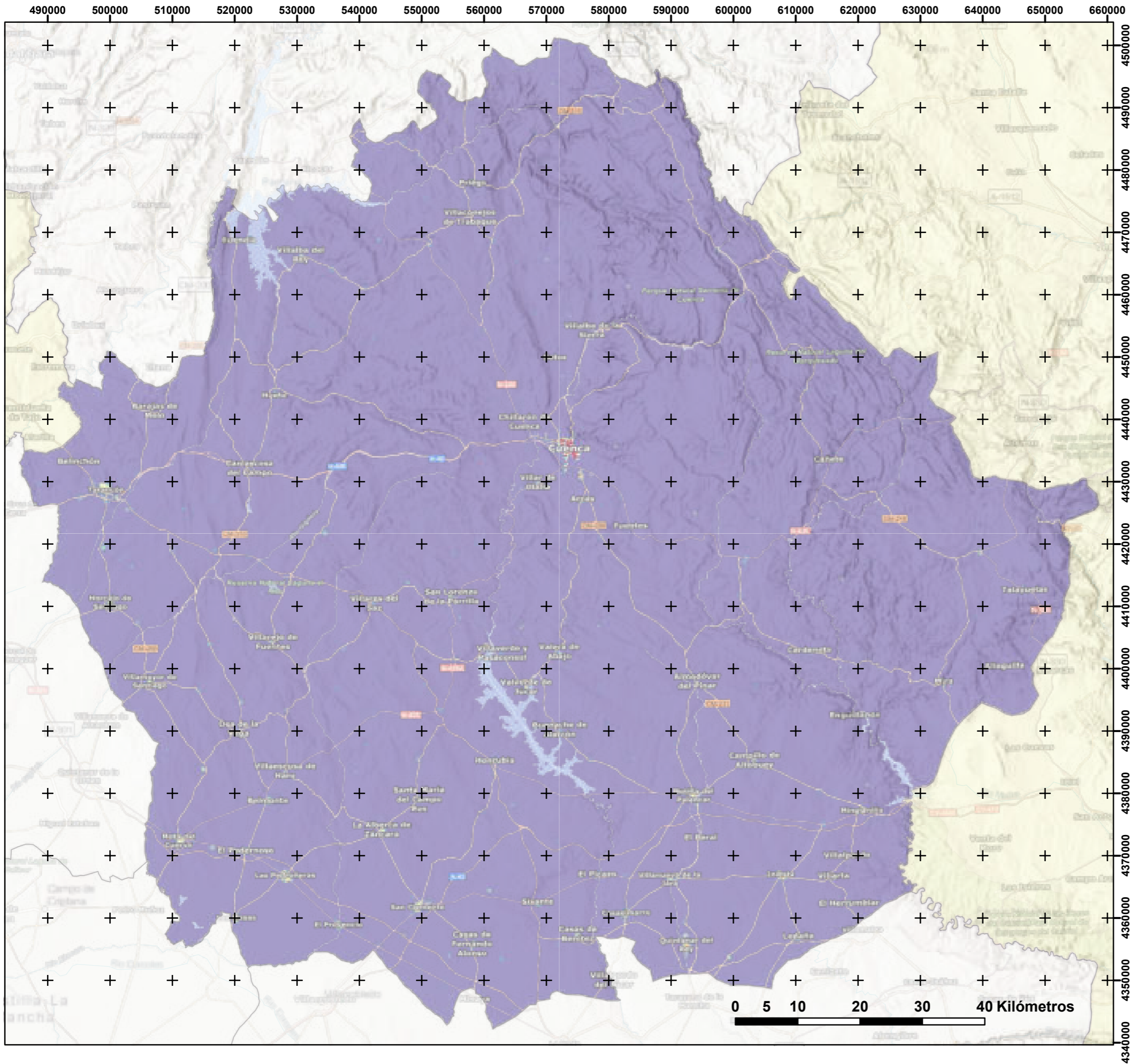
ETRS 1989 UTM ZONA 30N

Escala: 1:600.000



Peligro

1	2	3



PLAN PROVINCIAL DE DEFENSA
CONTRA INCENDIOS FORESTALES

CUENCA

Presencia Humana

ETRS 1989 UTM ZONA 30N

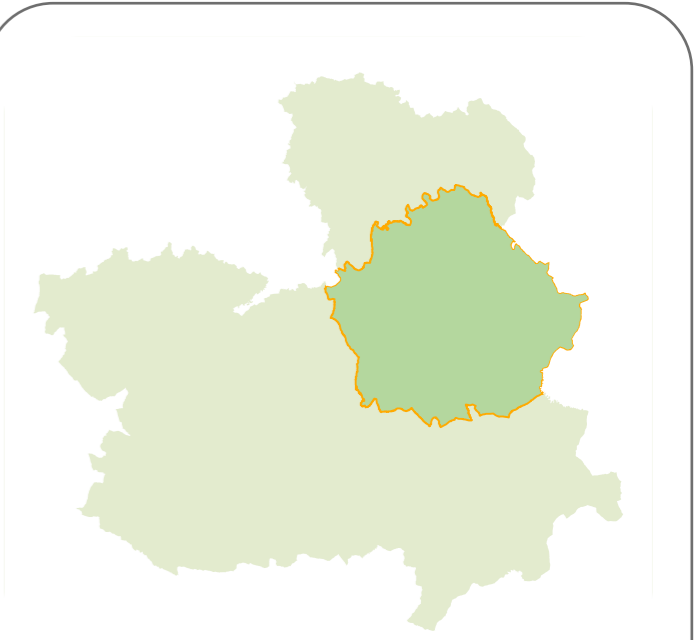
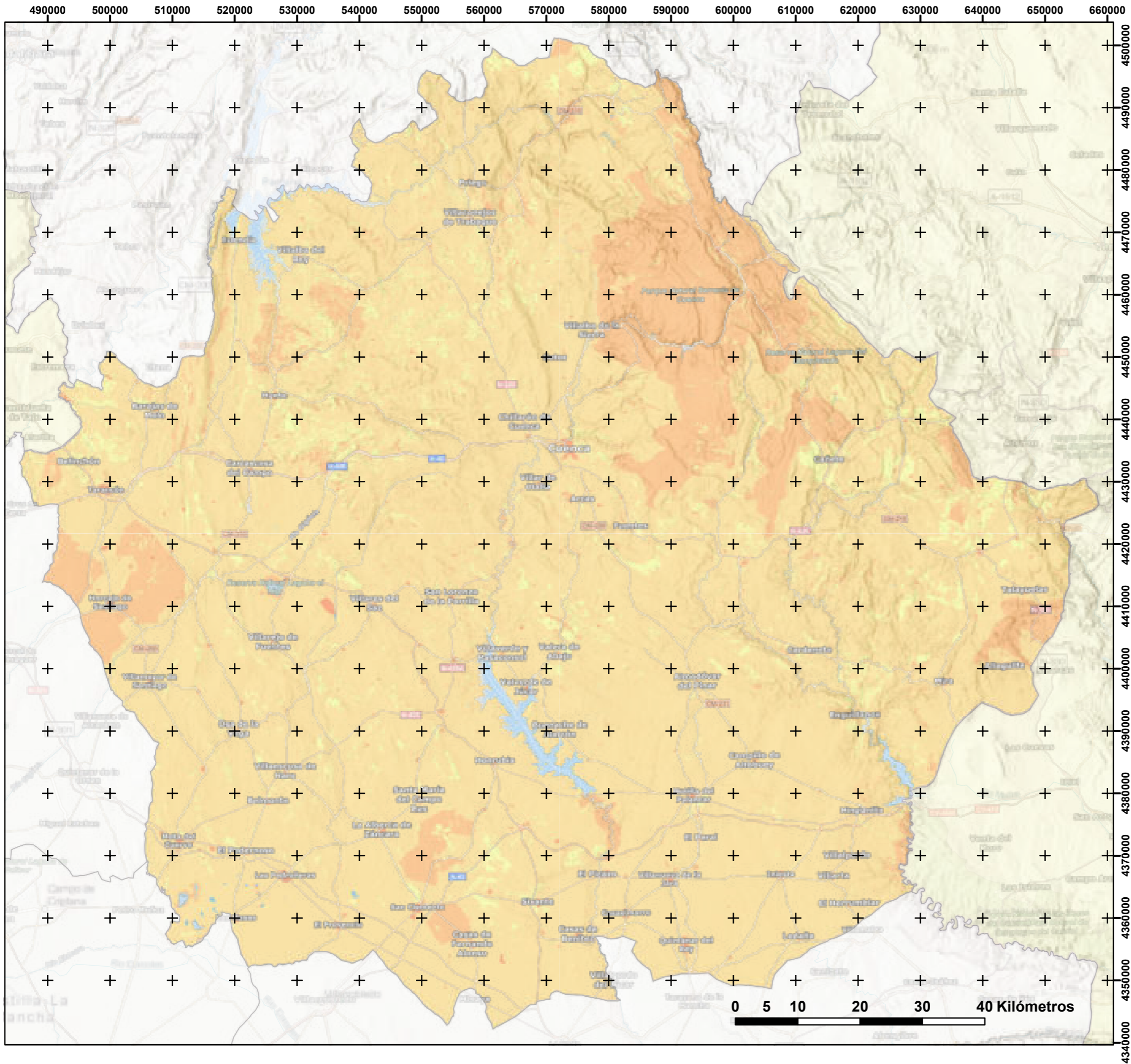
Escala: 1:600.000

Co-financiado por la Unión Europea

Castilla-La Mancha

Presencia Humana

1	2	3	4	5	6	7	8	9	10



PLAN PROVINCIAL DE DEFENSA
CONTRA INCENDIOS FORESTALES

CUENCA

Daño Potencial

ETRS 1989 UTM ZONA 30N

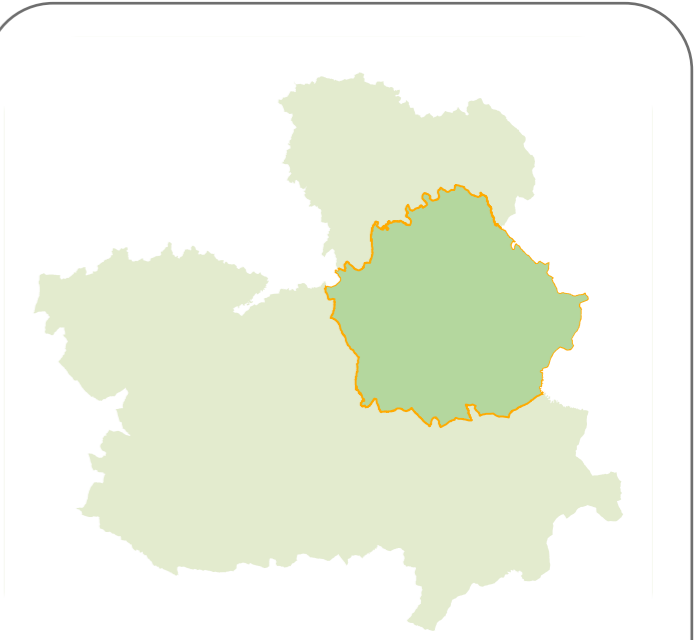
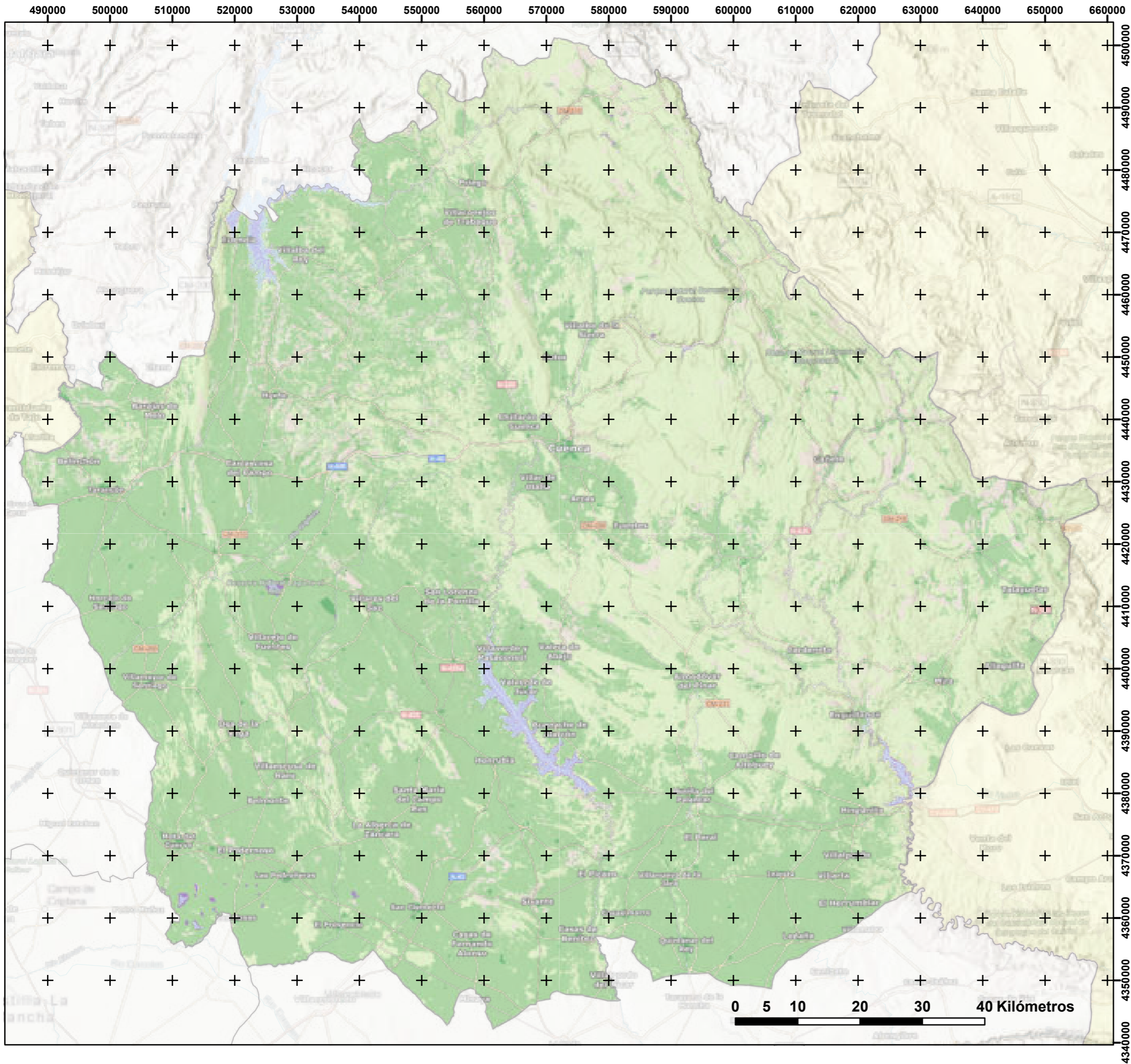
Escala: 1:600.000

Cofinanciado por la Unión Europea

Castilla-La Mancha

Daño Potencial

0 1 2 3 4 5 6 7 8



PLAN PROVINCIAL DE DEFENSA
CONTRA INCENDIOS FORESTALES

CUENCA

Daño potencial económico

ETRS 1989 UTM ZONA 30N

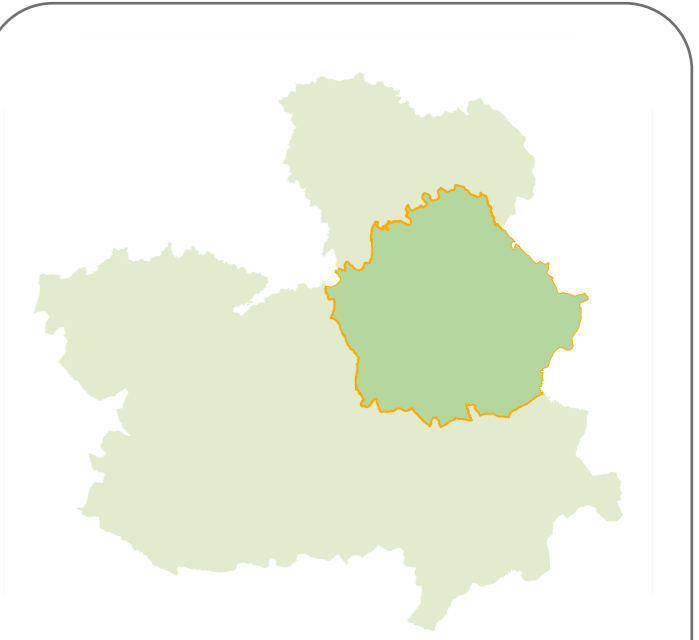
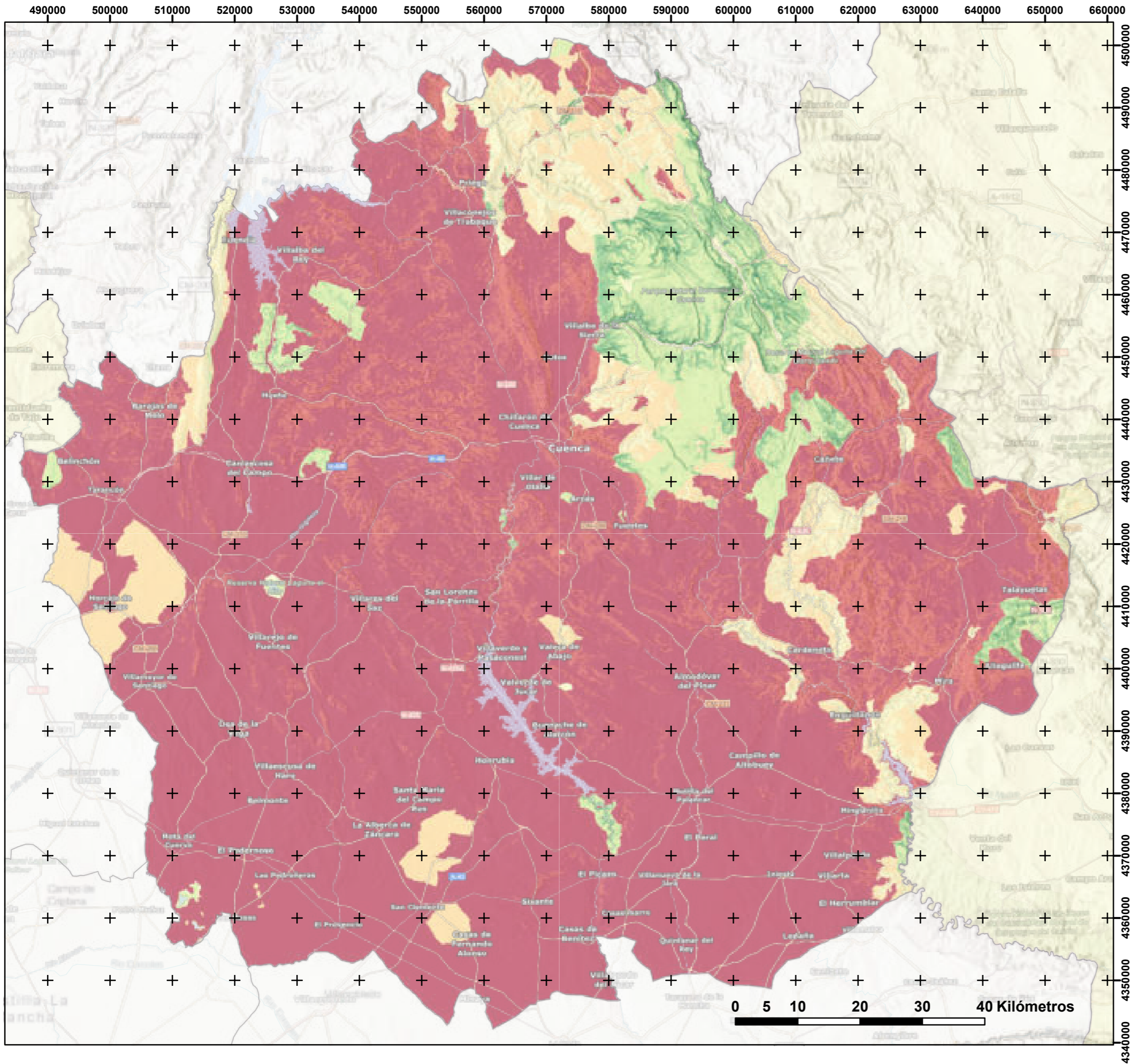
Escala: 1:600.000

Cofinanciado por la Unión Europea

Castilla-La Mancha

Daño potencial económico

0 3 5 6 1 9



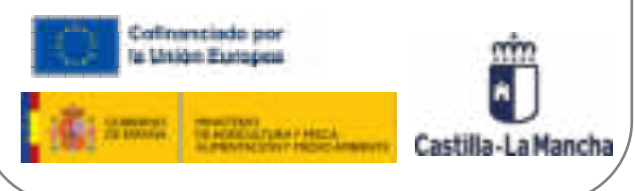
PLAN PROVINCIAL DE DEFENSA
CONTRA INCENDIOS FORESTALES

CUENCA

Daño potencial ecológico

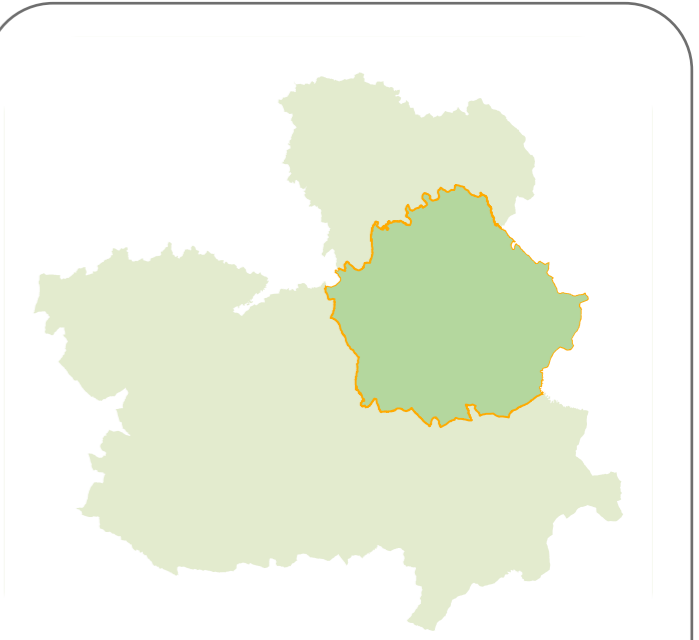
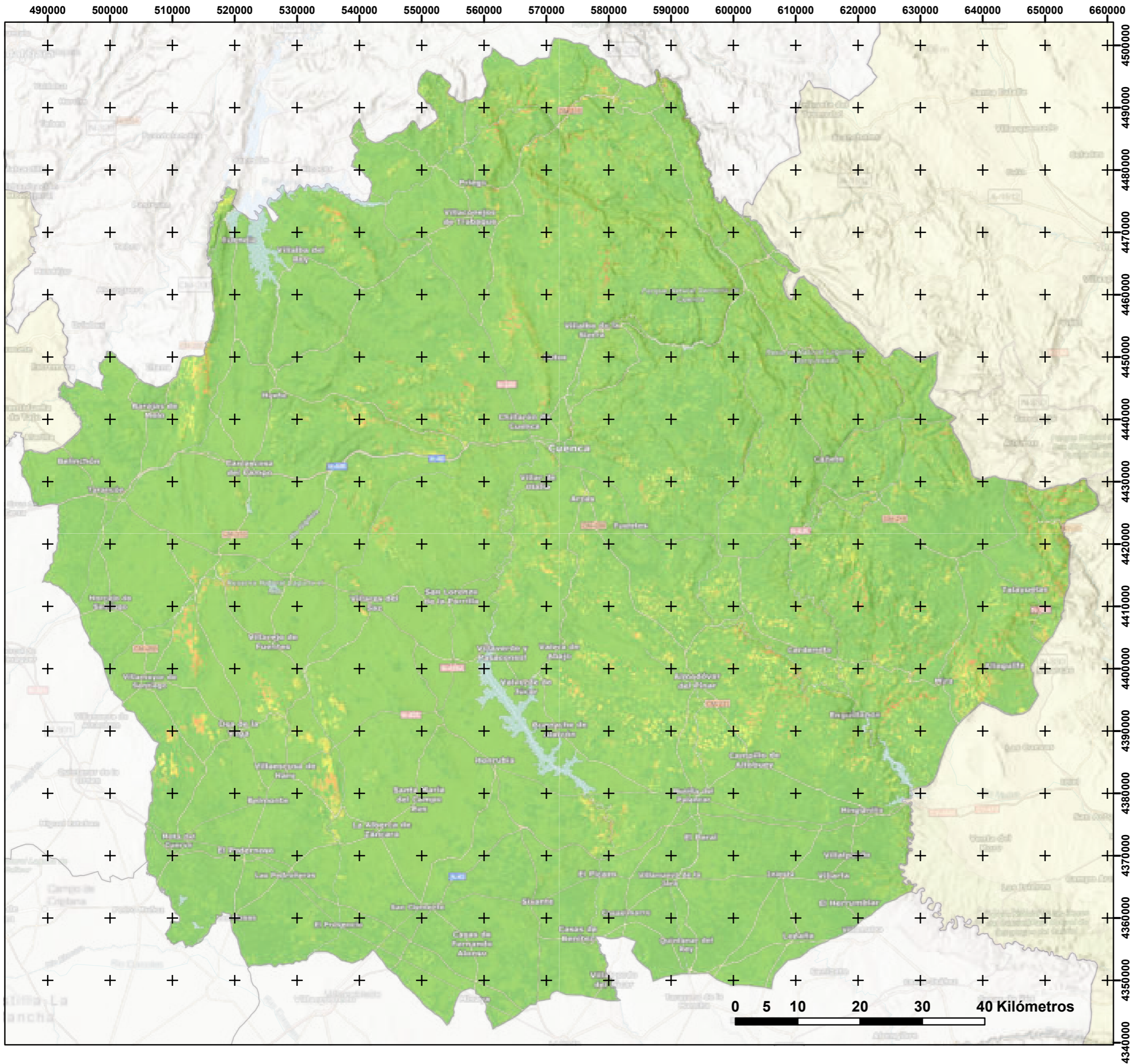
ETRS 1989 UTM ZONA 30N

Escala: 1:600.000



Daño potencial ecológico

1 2 3 4 5 6 7 8 9



PLAN PROVINCIAL DE DEFENSA
CONTRA INCENDIOS FORESTALES

CUENCA

Dificultad de Extinción

ETRS 1989 UTM ZONA 30N

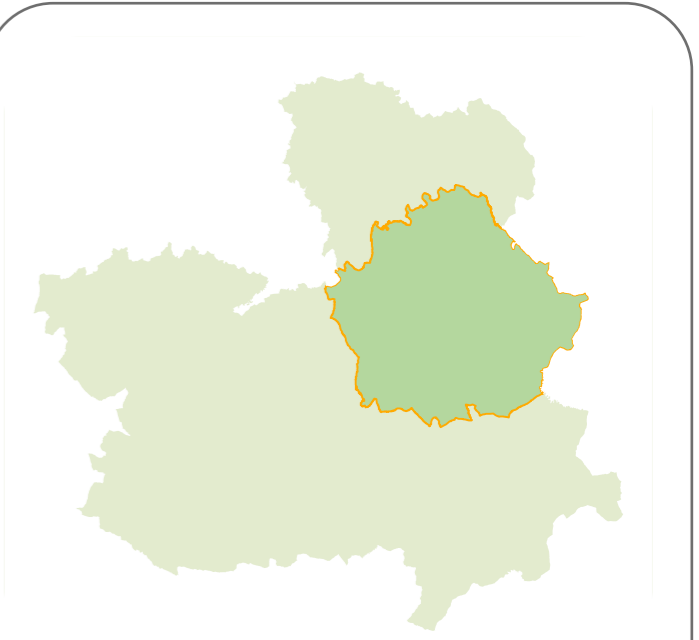
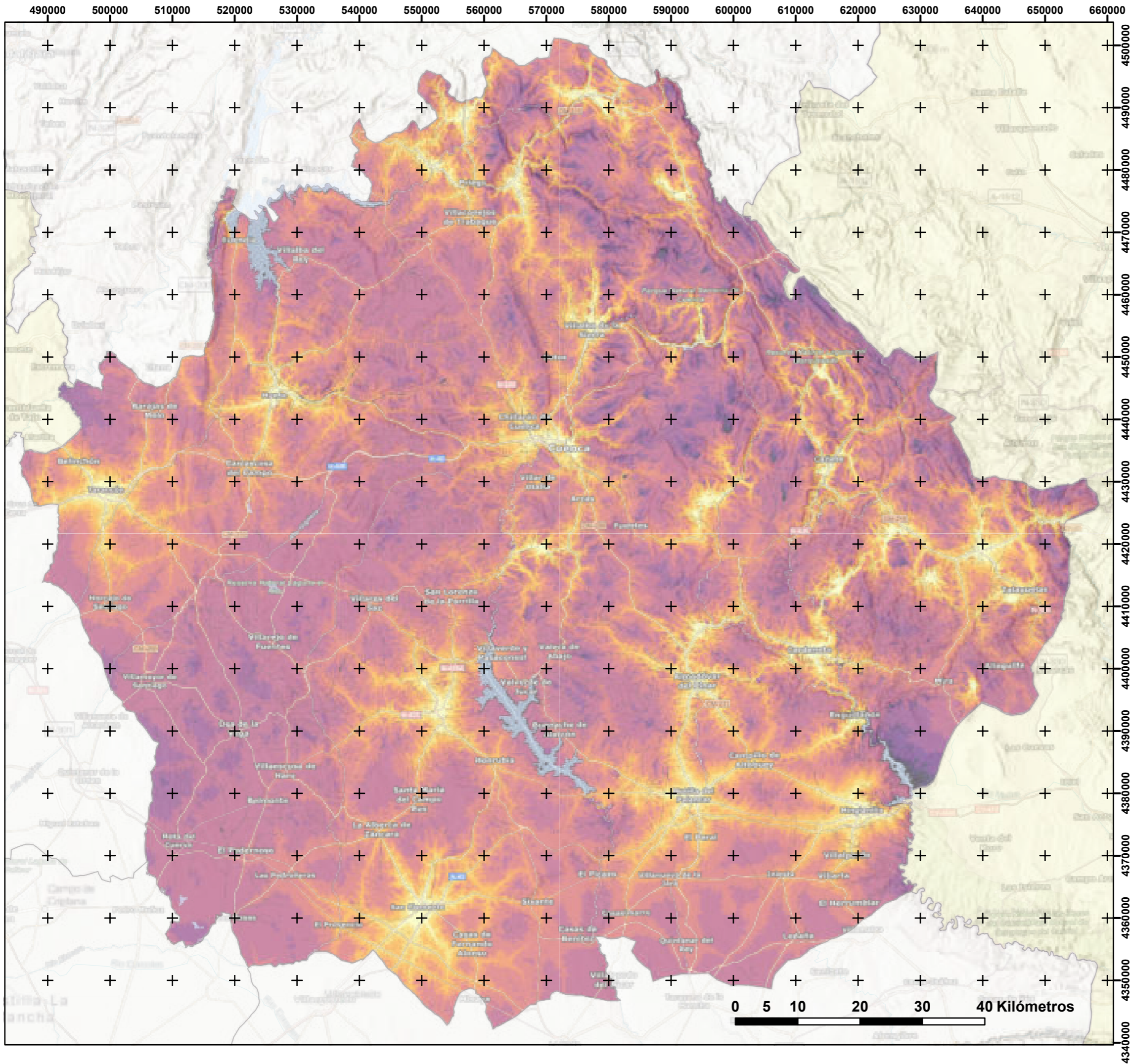
Escala: 1:600.000

Co-financiado por la Unión Europea

Castilla-La Mancha

Dificultad de Extinción

1 2 3 4 5 6 7 8 9 10



PLAN PROVINCIAL DE DEFENSA
CONTRA INCENDIOS FORESTALES

CUENCA

Accesibilidad

ETRS 1989 UTM ZONA 30N

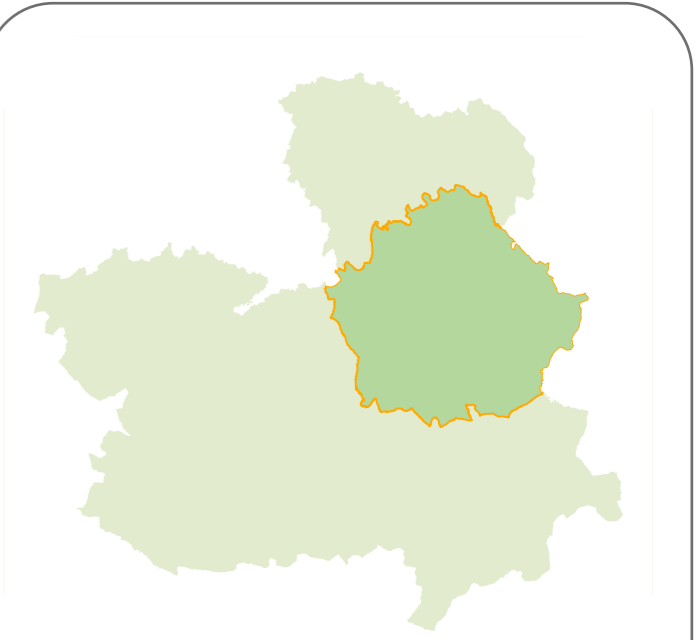
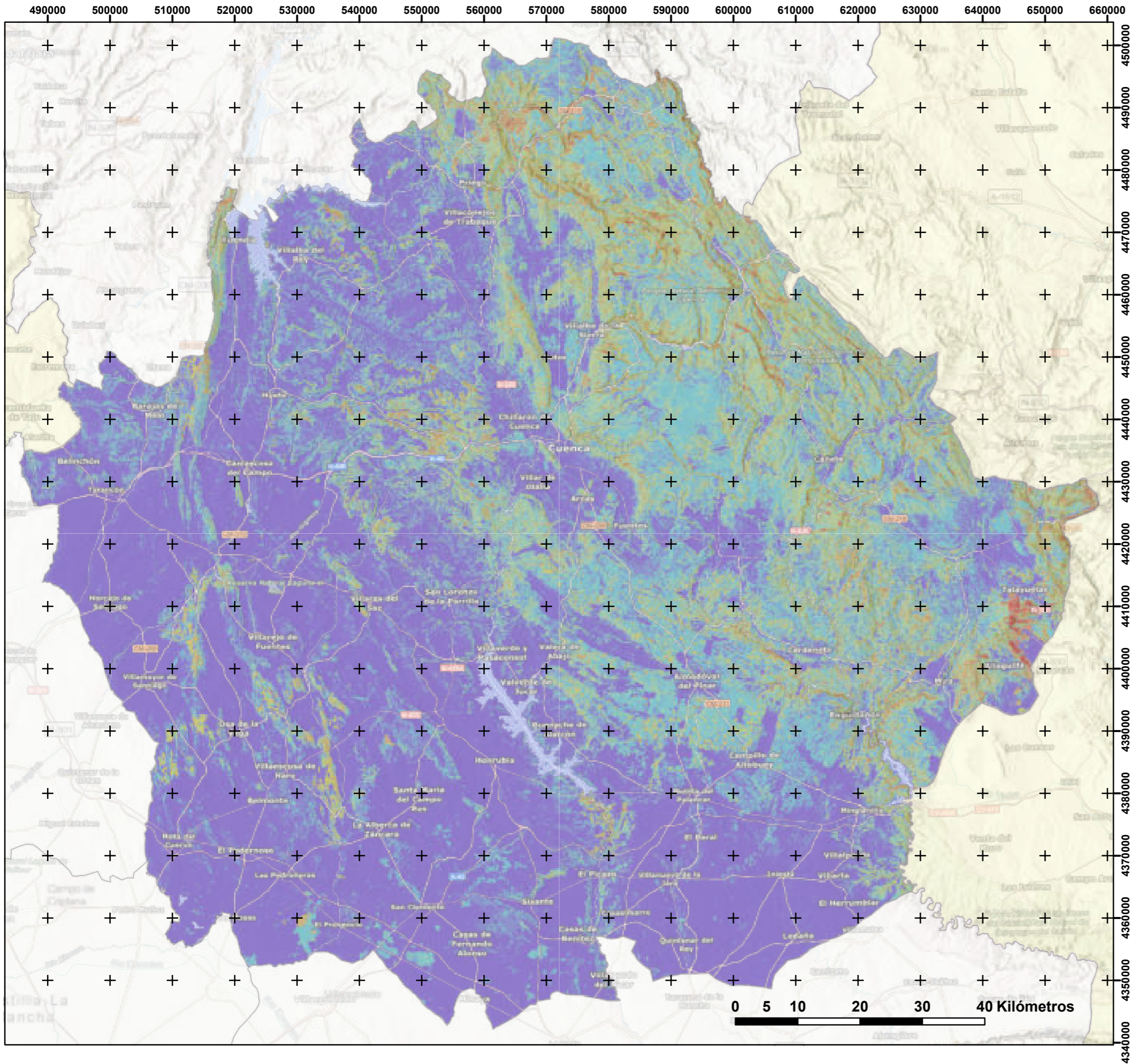
Escala: 1:600.000

Co-financiado por la Unión Europea

Castilla-La Mancha

Accesibilidad

1 2 3 4 5 6 7 8 9 10



PLAN PROVINCIAL DE DEFENSA
CONTRA INCENDIOS FORESTALES

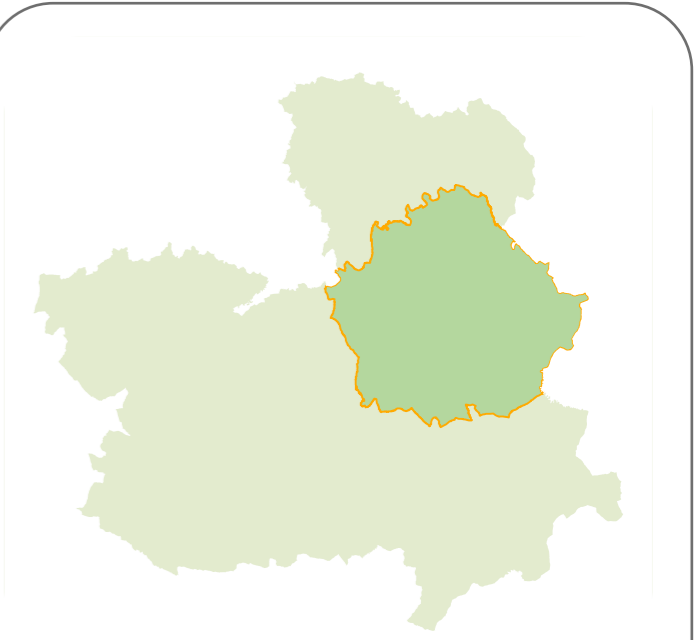
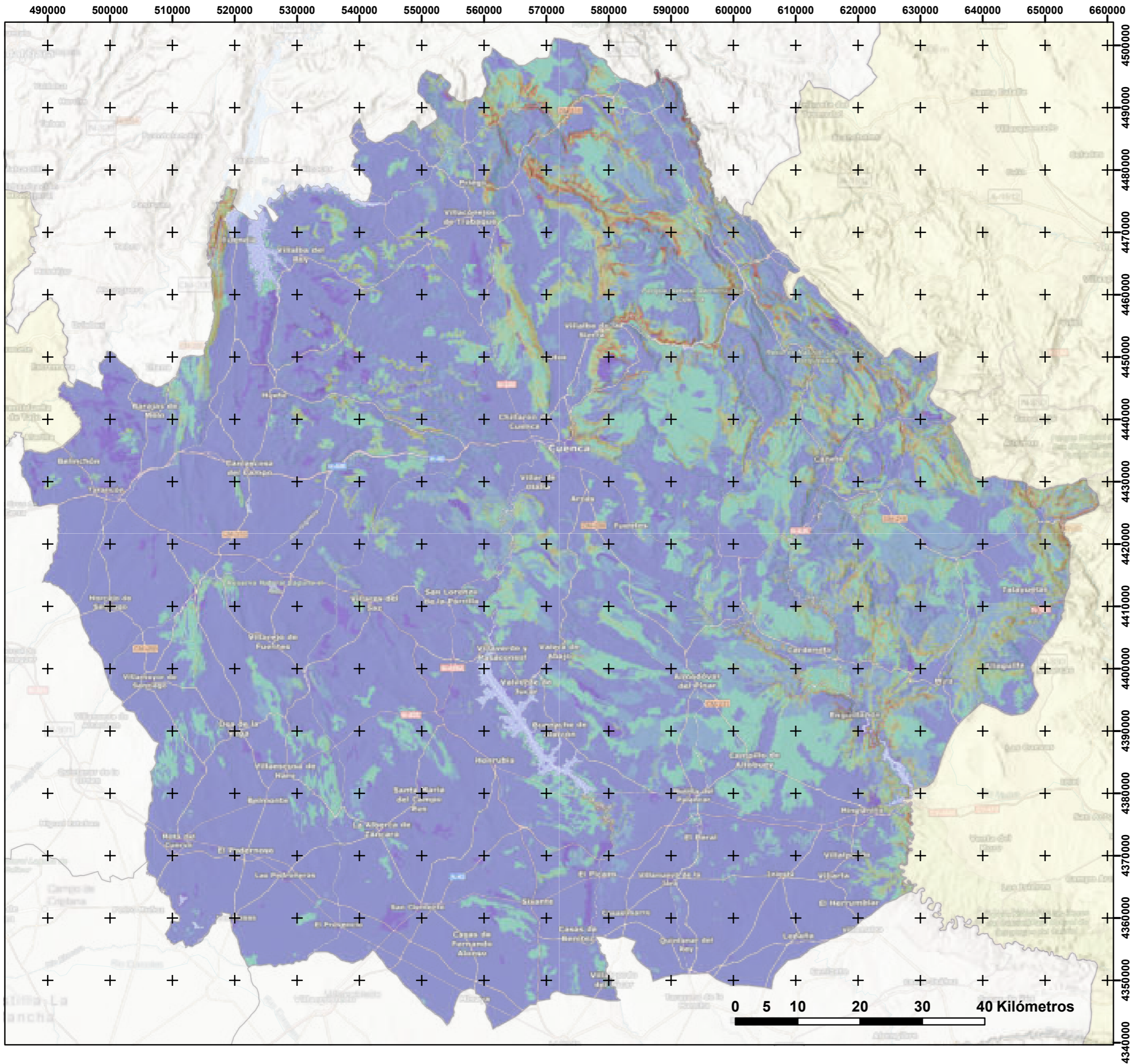
CUENCA

Apertura de línea de defensa manual

ETRS 1989 UTM ZONA 30N

Escala: 1:600.000

Apertura de línea de defensa manual



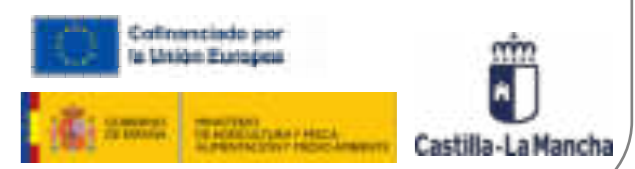
PLAN PROVINCIAL DE DEFENSA
CONTRA INCENDIOS FORESTALES

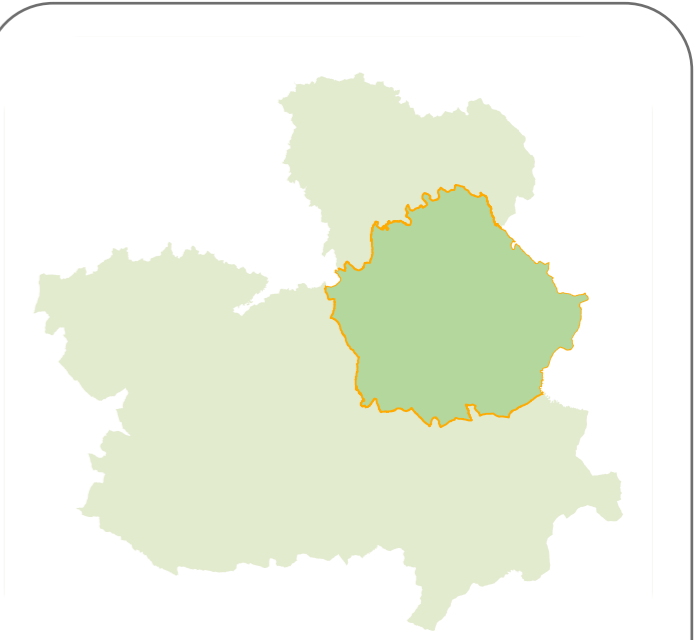
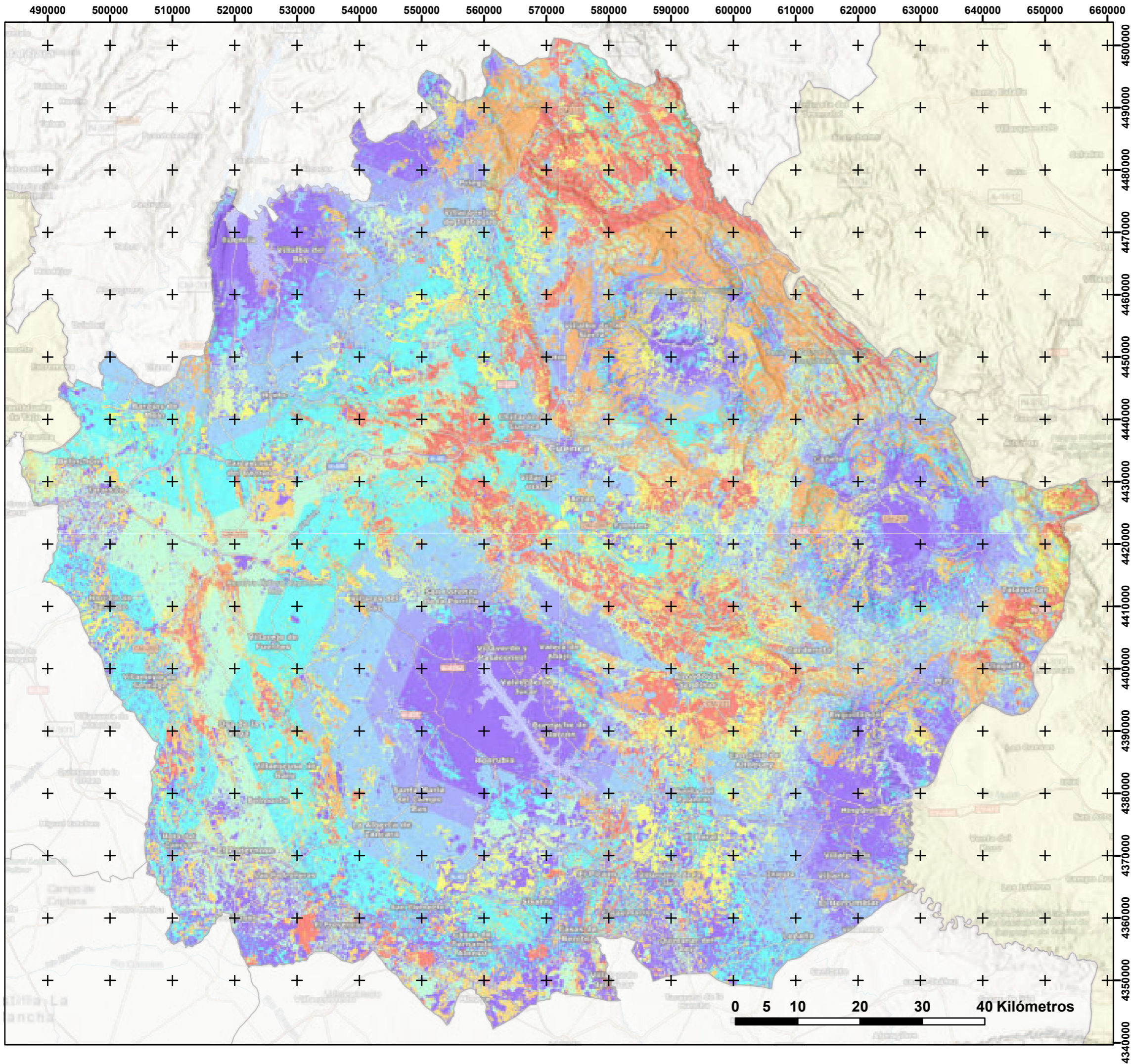
CUENCA

Apertura de línea de defensa mecanizada

ETRS 1989 UTM ZONA 30N

Escala: 1:600.000





PLAN PROVINCIAL DE DEFENSA
CONTRA INCENDIOS FORESTALES

CUENCA

Eficacia medios aéreos ala fija

ETRS 1989 UTM ZONA 30N

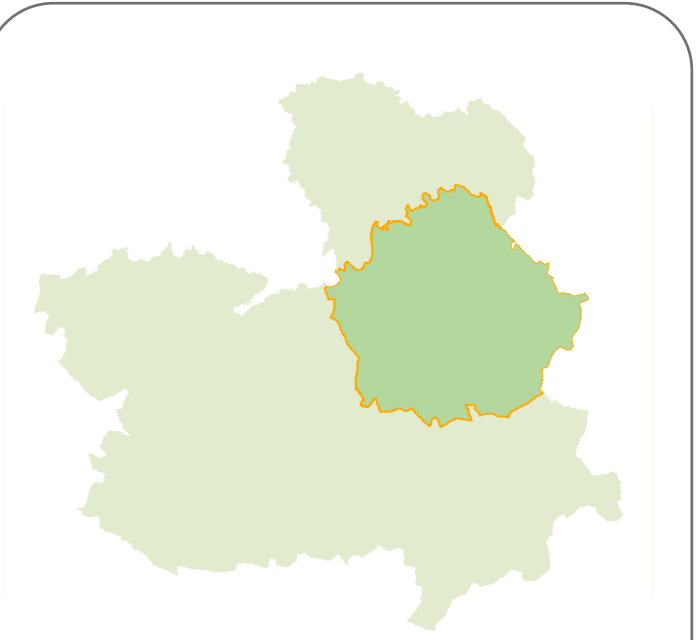
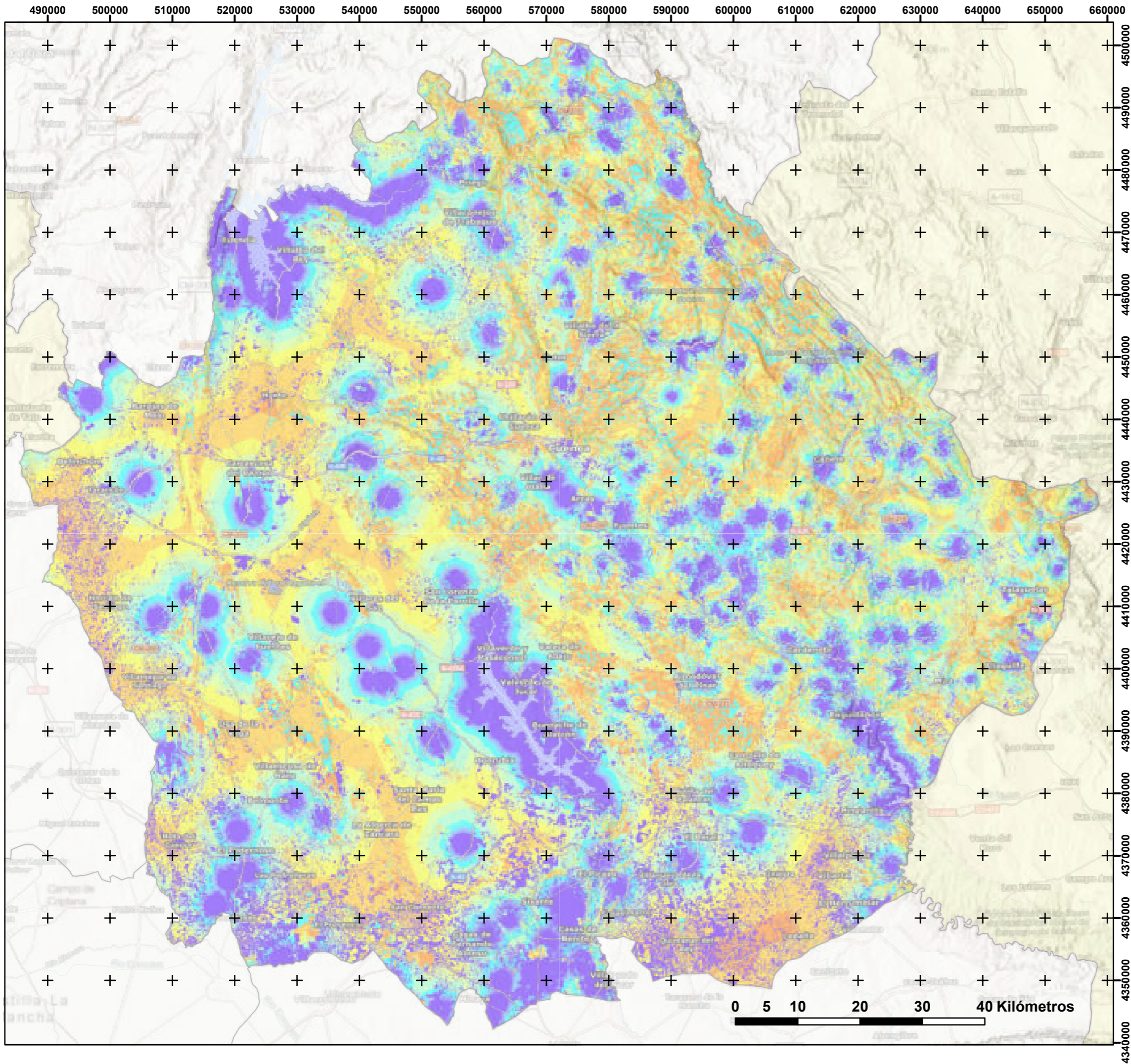
Escala: 1:600.000

Cofinanciado por la Unión Europea

Castilla-La Mancha

Eficacia medios aéreos ala fija

1	2	3	4	5	6	7	8	9	10
Red	Orange	Yellow	Light Green	Green	Cyan	Blue	Dark Blue	Purple	Dark Purple



PLAN PROVINCIAL DE DEFENSA
CONTRA INCENDIOS FORESTALES

CUENCA

Eficacia medios aéreos ala rotativa

ETRS 1989 UTM ZONA 30N

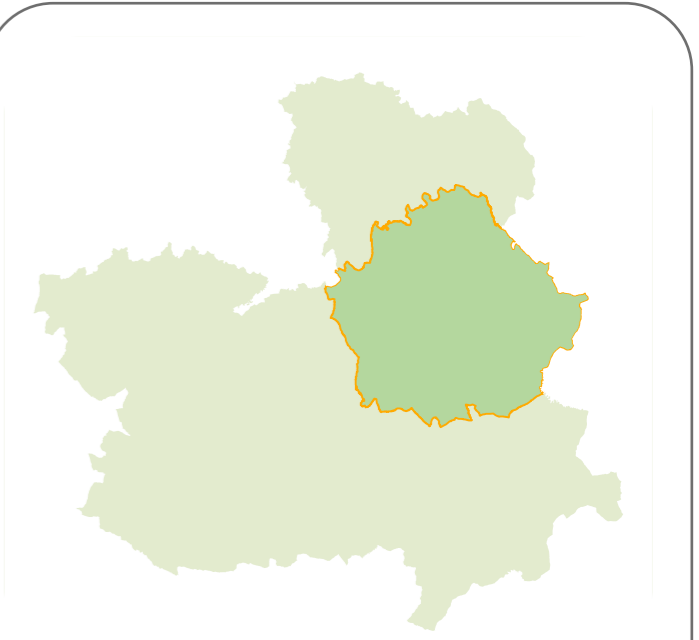
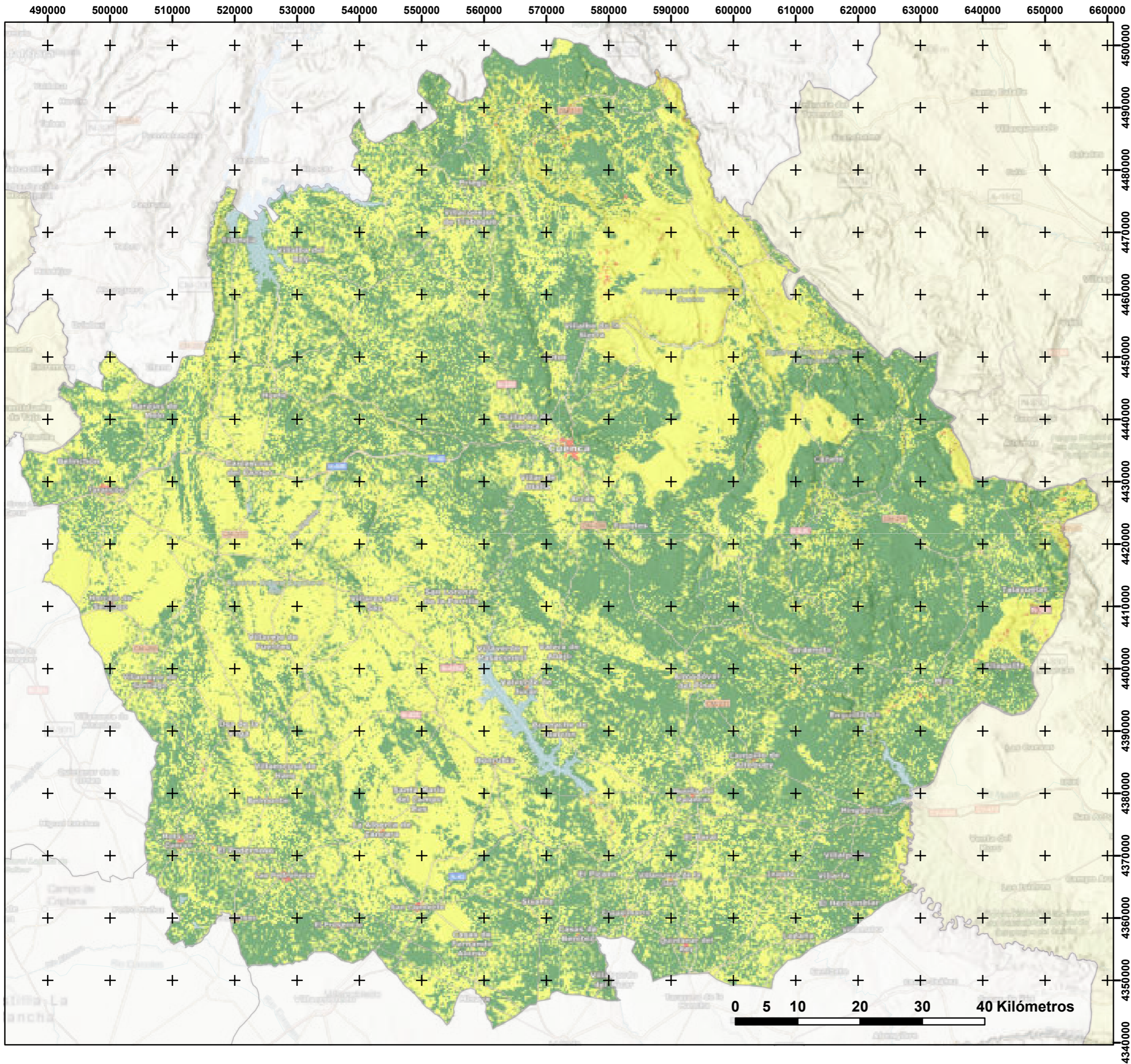
Escala: 1:600.000

Cofinanciado por la Unión Europea

Castilla-La Mancha

Eficacia medios aéreos ala rotativa

1	2	3	4	5	6	7	8	9	10
Red	Orange	Yellow	Light Green	Green	Cyan	Blue	Dark Blue	Purple	Dark Purple



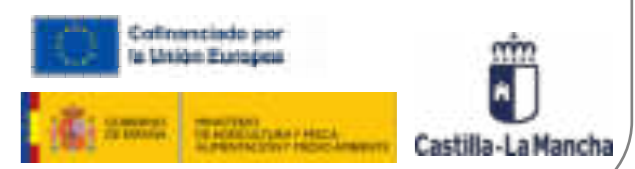
PLAN PROVINCIAL DE DEFENSA
CONTRA INCENDIOS FORESTALES

CUENCA

VULNERABILIDAD

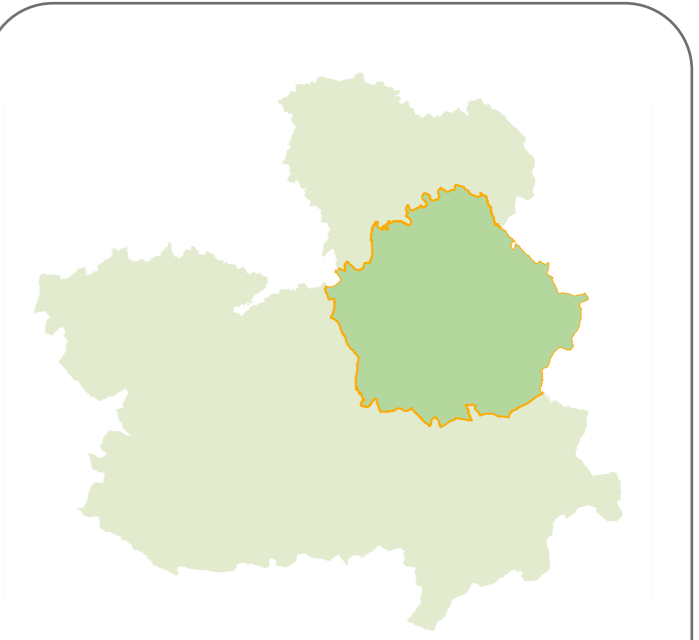
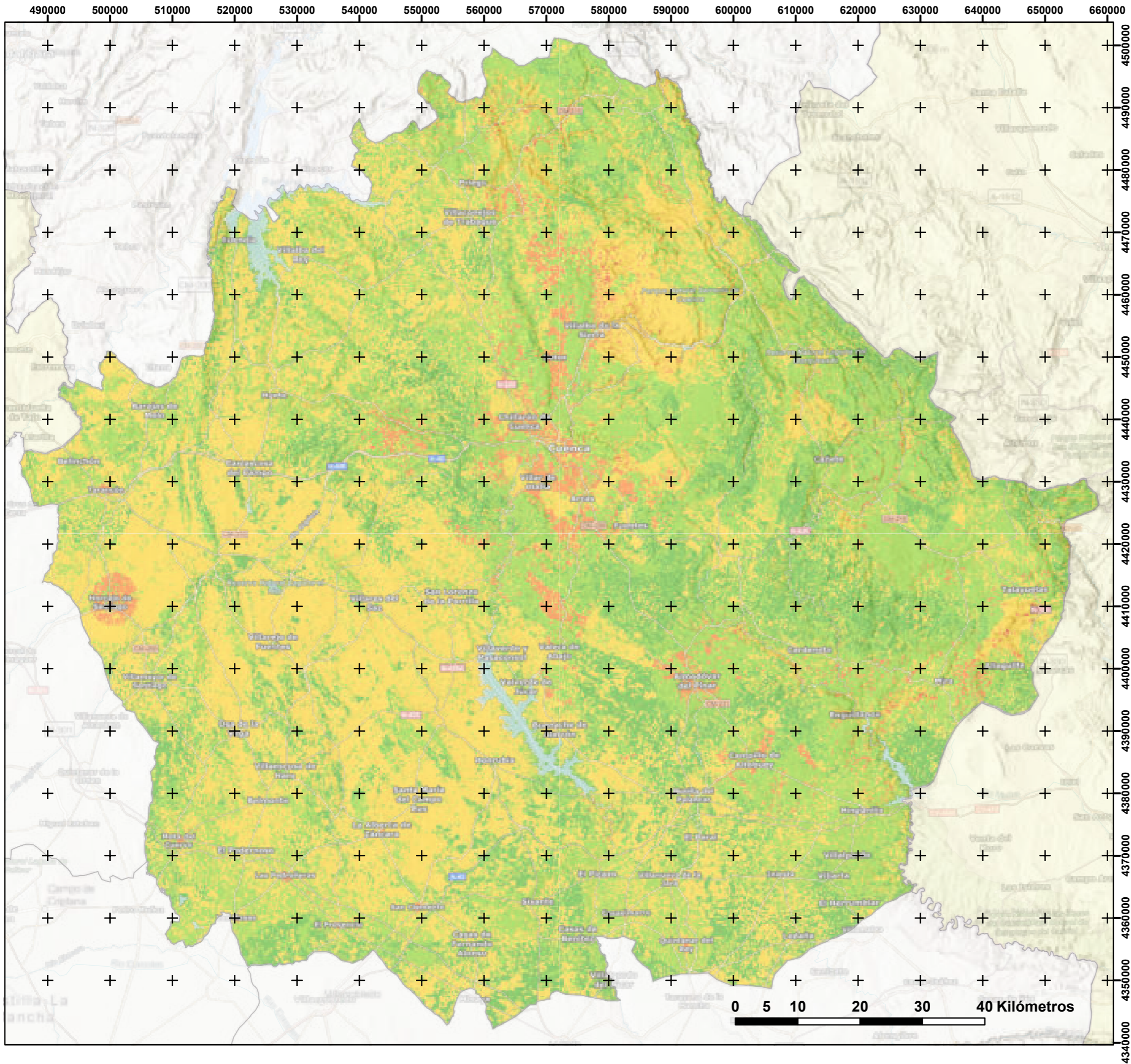
ETRS 1989 UTM ZONA 30N

Escala: 1:600.000



VULNERABILIDAD

1 2 3



PLAN PROVINCIAL DE DEFENSA
CONTRA INCENDIOS FORESTALES

CUENCA

RIESGO

ETRS 1989 UTM ZONA 30N

Escala: 1:600.000

Co-financiado por la Unión Europea

Castilla-La Mancha

RIESGO

1 2 3 4 6 9